



HESS - ROUNTREE, INC.  
CONSULTING ENGINEERS & LAND SURVEYORS  
9831 SOUTH 51ST STREET, SUITE C110  
PHOENIX, ARIZONA 85044 (480)496-0244

DES. **VR** DRN. **ANM** CKD **DRO** JOB NO. **2212-14**

**GRADING AND DRAINAGE CONSTRUCTION NOTES:**

1. INSTALL NEW A.C. PAVEMENT (3" A.C. OVER 8" A.B.C. OVER COMPACTED SUBGRADE).
2. CONSTRUCT CONCRETE SINGLE CURB (MAG STANDARD DETAIL NO. 222, TYPE 'A').
3. PAINT STRIPE TO THE ALIGNMENTS INDICATED INCLUDING ALL WALK WAY, DROP-OFF AREA, ETC. (TYPICAL).
4. INSTALL CONCRETE SIDEWALK (CITY OF PHOENIX STANDARD DETAIL NO. P1230).
5. INSTALL VAN ACCESSIBLE HANDICAP PARKING SIGN PER ADA AND CITY OF TOLLESON REQUIREMENTS. POST AND BASE SHALL BE PER MAG STANDARD DETAIL NO. 131, TYPE 'B'.
6. PAINT STRIPE VAN ACCESSIBLE HANDICAP PARKING STALL AND ADA PATH PER CITY OF PHOENIX AND ADA REQUIREMENTS.
7. INSTALL NEW 6' HIGH WROUGHT IRON FENCE. SEE DETAIL ON THIS SHEET.

SEE ELECTRICAL DRAWINGS.  
MAG STANDARD DETAIL NO. 240, (OW LINE).

CONSTRUCTION.  
N LINES/BOXES/SPRINKLERS  
D TO PROVIDE A 100%  
POST-CONSTRUCTION.

CONCRETE SIDEWALK/A.C.  
DE OF SLOPE AT A 5:1

CTED FROM DAMAGE. MATCH  
TREE AND STRAIGHT GRADE  
(MUM SLOPE).

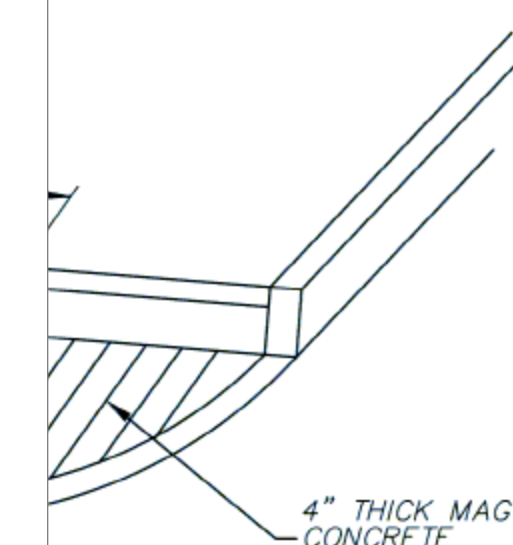
ON THIS SHEET).

LEY GUTTER, CURB AND/OR  
EVATION.

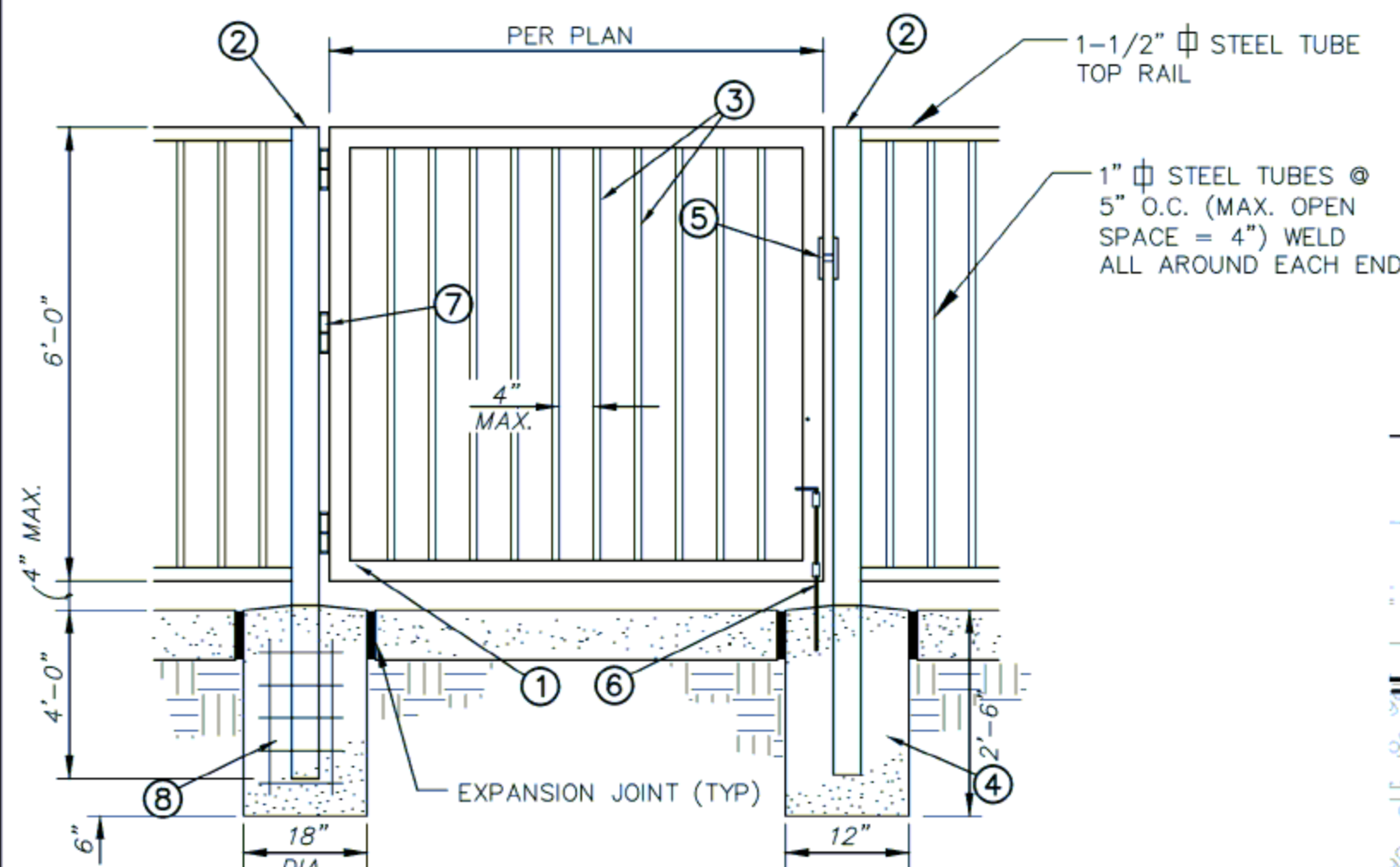
ON ROLLING GATE (SEE DETAIL

ING A.C. PAVEMENT IN KIND AS  
E/FENCE.

NOT MEET THE MINIMUM BUS  
OVER 8" A.B.C. PER THE SOILS  
CTION SHALL BE REMOVED AND  
VER 8" A.B.C.



**MP**



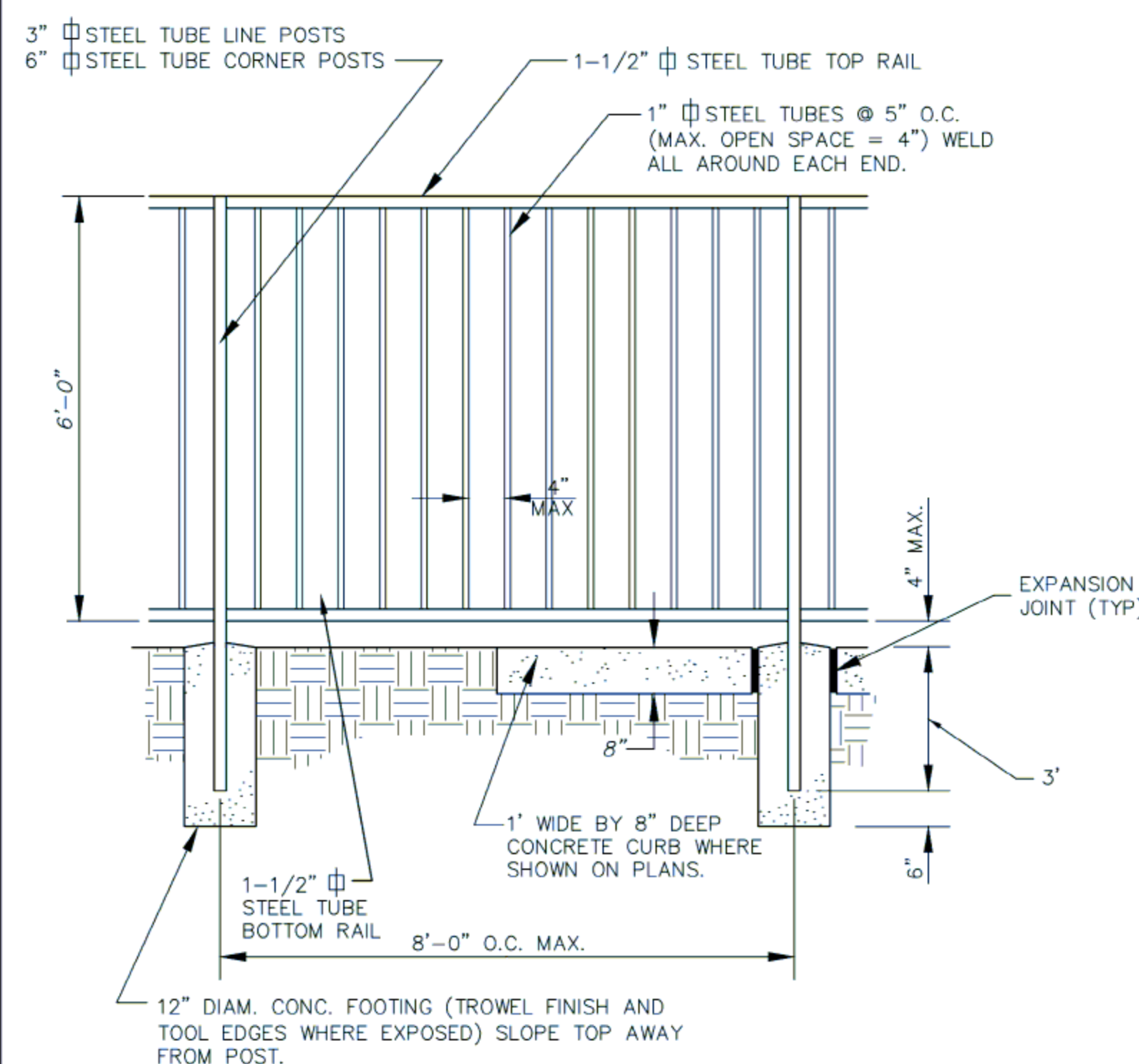
**KEY NOTES**

1. 2" X 3" STEEL TUBE GATE FRAME
2. 6" X 6" STEEL TUBE POST
3. 1" X 1" STEEL TUBE AT 5" O.C.
4. CONCRETE FOOTING (TROWEL FINISH & TOOL EDGES WHERE EXPOSED) SLOPE TOP AWAY FROM POST
5. TABS FOR PAD
6. CANE BOLT & KEEPER IN CONCRETE AT OPEN & CLOSED POSITION
7. HEAVY DUTY HINGES - CONTINUOUS WELD AT EDGES ALLOWING 180° GATE OPENING
8. 6-#8 REBAR VERTICALLY AND #3 REBAR TIES AT 12" O.C.

**NOTE:**

ALL GATES SHALL BE LOCKABLE IN THE OPEN AND CLOSED POSITION. COLOR OF WROUGHT IRON GATES PER OWNER. ALL FENCE/GATE DIMENSIONS SHALL BE FIELD VERIFIED PRIOR TO CONSTRUCTION.

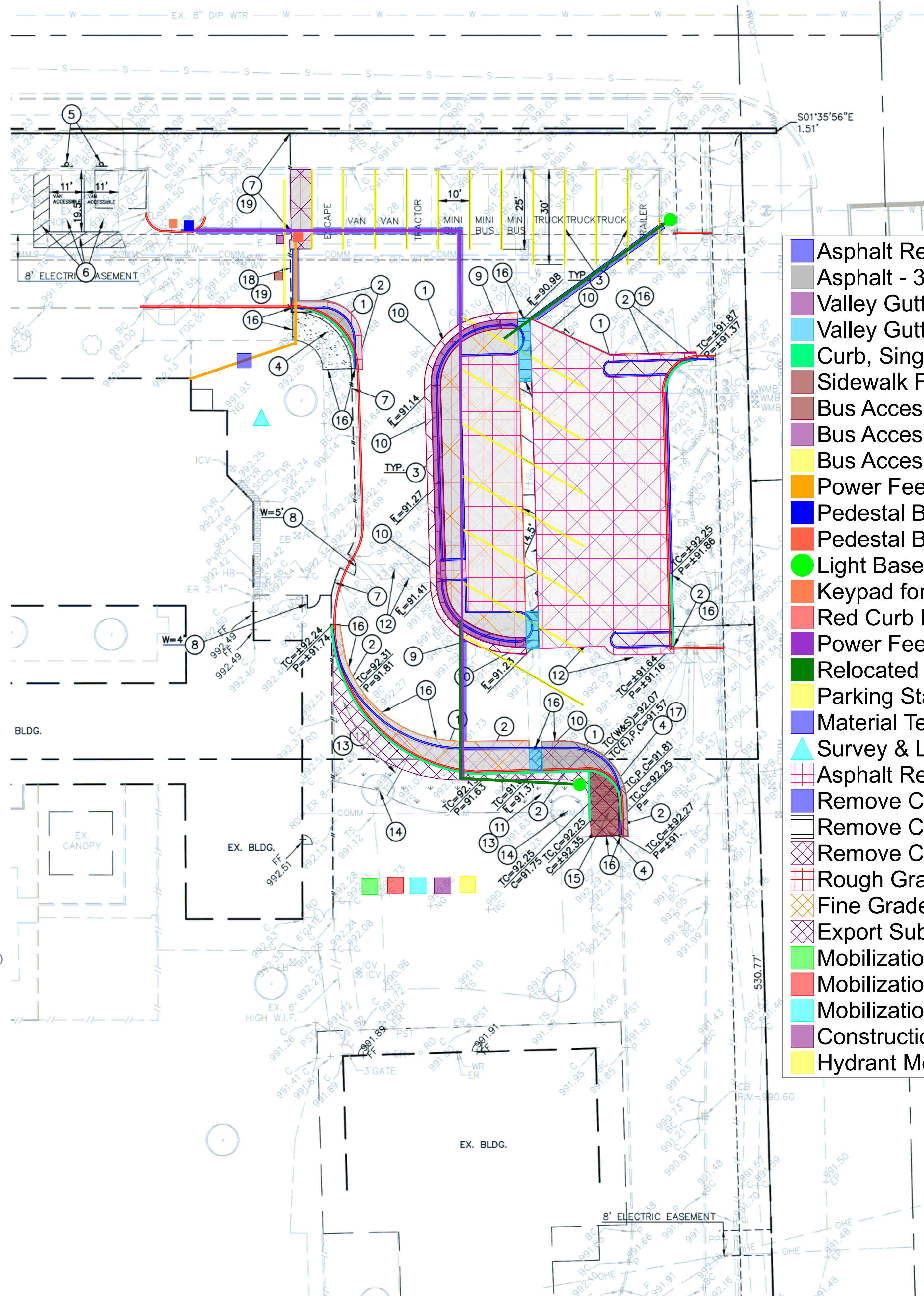
**WROUGHT IRON GATE DETAIL**  
NOT TO SCALE



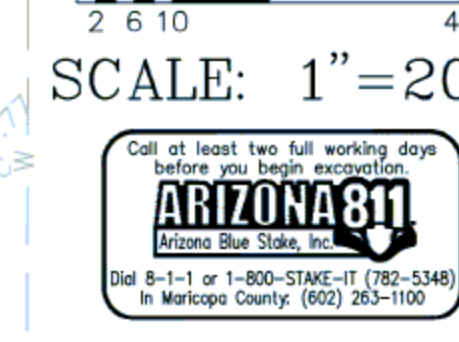
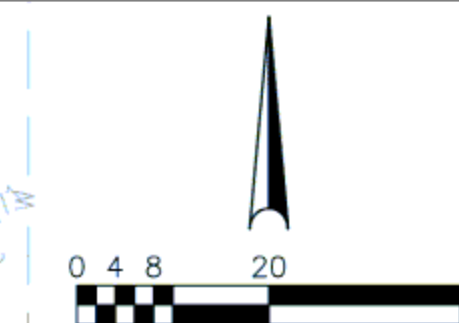
**NOTE:**

COLOR OF WROUGHT IRON GATES PER OWNER. ALL FENCE/GATE DIMENSIONS SHALL BE FIELD VERIFIED PRIOR TO CONSTRUCTION.

**WROUGHT IRON FENCE DETAIL**  
NOT TO SCALE



- Asphalt Removal & 3" over 8" ABC Patch for Electrical
- Asphalt - 3" over 8" ABC
- Valley Gutter, 3'-0"W (MAG Detail 240)
- Valley Gutter, 4'-0"W (MAG Detail 240)
- Curb, Single (MAG Detail 222, Type A)
- Sidewalk For Bus Drop Off
- Bus Access Gate - 20'-0"W x 6'-0"H
- Bus Access Gate Operator w/Ground Loop
- Bus Access Gate Steel Rolling Gate "V" Track
- Power Feed from Panel LB to New Rolling Gate Operator
- Pedestal Base for Keypad - 2'x2'x6"
- Pedestal Base for Bus Access Gate Operator - 2'x2'x6"
- Light Base for Relocated Pole & Fixture - 2'D x 6'H
- Keypad for Bus Access Gate
- Red Curb Painting - Fire Lane
- Power Feed from Existing IT Room to Rolling Gate Keypad
- Relocated Parking Lot Light Pole Fixture
- Parking Stall Striping - Bus
- Material Testing
- Survey & Layout
- Asphalt Removal
- Remove Concrete Curb
- Remove Concrete Valley Gutter
- Remove Concrete Sidewalk
- Rough Grade at Asphalt Areas
- Fine Grade at Asphalt Areas
- Export Subgrade for New Thickened Asphalt Profile
- Mobilization - Earthwork
- Mobilization - Subgrade & ABC
- Mobilization - Asphalt Pavement
- Construction Water
- Hydrant Meter



**GRADING AND DRAINAGE PLAN**

**UNION ELEMENTARY DISTRICT NO. 62**

**TRANSPORTATION FACILITY AT  
UNION ELEMENTARY SCHOOL**

DRAWING STATUS	SHEET	OF
100% CD SET	3	3
DATE: 10-03-23		

**C-3**